

Geography



Intent



At Southway, our Geography Curriculum is designed

- To help children acquire and develop the skills and confidence to advance their geographical understanding.
- To develop an understanding and use of geographical language to communicate their understanding of the world around them.
- To stimulate the children's interest in and curiosity about their surroundings.
- To nurture a sense of wonder about the world.
- To understand the processes that give rise to key physical and human geographical features of the world, how these are interdependent and how they bring about spatial variation and change over time.
- To develop the children's knowledge, to encourage a sense of responsibility for the environments and people of the world we live in, so they will think about how it can be improved and sustained.
- To develop a sense of place and identity by learning about the United Kingdom and its relationship with other countries.

Implementation



At Southway, our intent for the Geography curriculum are:

- To help children acquire and develop their resilience, teamwork and confidence to advance their geographical understanding.
- To develop an understanding and use of geographical language to communicate their understanding and respect of the world around them.
- To stimulate the children's interest in and curiosity about their surroundings.
- To nurture a sense of wonder and kindness about the world.
- To understand the processes that give rise to key physical and human geographical features of the world, how these are interdependent and how they bring about spatial variation and change over time.
- To develop the children's knowledge, to encourage a sense of responsibility for the environments and people of the world we live in, so they will think about how it can be improved and sustained.
- To develop a sense of place and identity by learning about the United Kingdom and its relationship with other countries.

Impact



By the end of Year 6 children will be able to discuss and/or demonstrate in books:

- Extend their knowledge and understanding beyond the local area to include the United Kingdom and Europe, North and South America to include the location and characteristics of a range of the world's most significant human and physical features.
- Develop their use of geographical knowledge, understand and skills to enhance their locational and place knowledge.

Southway Three IIs

At Southway our pedagogical approach is based on three key, identifiable elements.



INDEPENDENT LEARNING MEANS...

- Teachers providing structured, well ordered classrooms
- Teachers ensuring clear routines
- Staff having consistent learning behaviour expectations
- Teachers providing high quality resources
- Teachers promoting children as teachers as well as learners
- Teachers providing appropriate tasks and learning for children to access at all levels of ability
- Staff applying the C3B4ME – ‘See three before me’ approach

INTERACTIVE LEARNING MEANS...

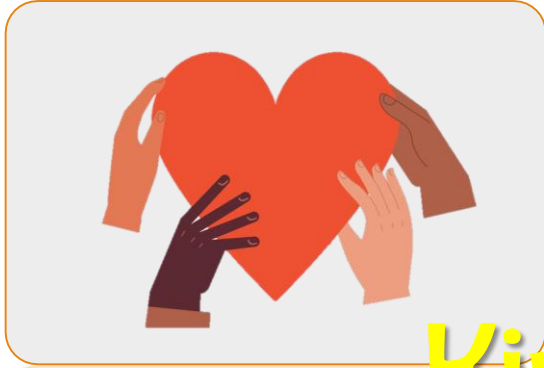
- Teachers finding appropriate opportunities for exploratory learning through hands on experiences
- Teachers using the outdoors as a teaching and learning space



INSIDE-OUT LEARNING MEANS...

- Children working harder than teachers
- Children investigating rather than being told
- Teachers asking more open ended questions
- Teachers focusing on enquiry based learning
- Teachers demanding excellence

Southway's Values



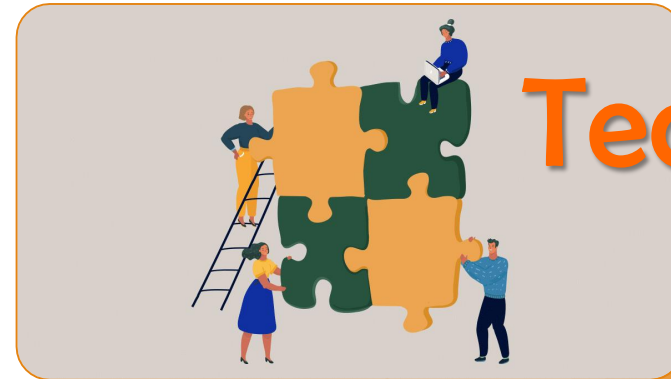
Kindness



Respect



Resilience



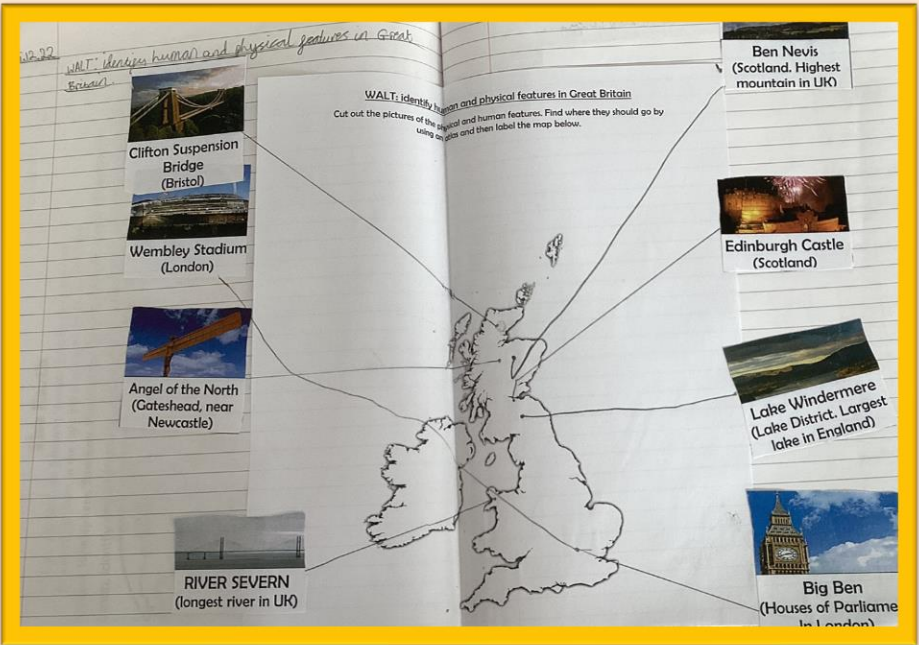
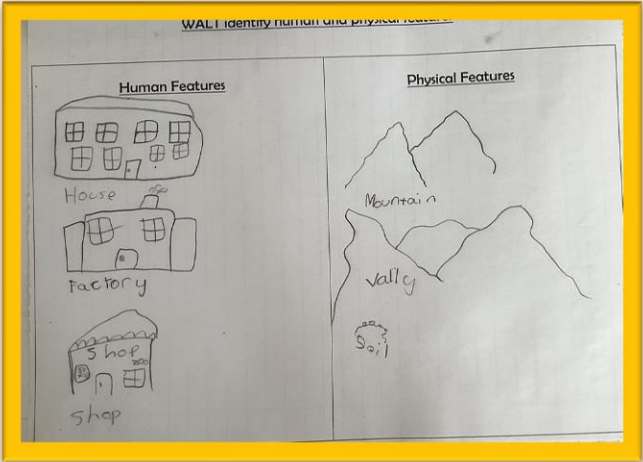
Teamwork

Curriculum Overview

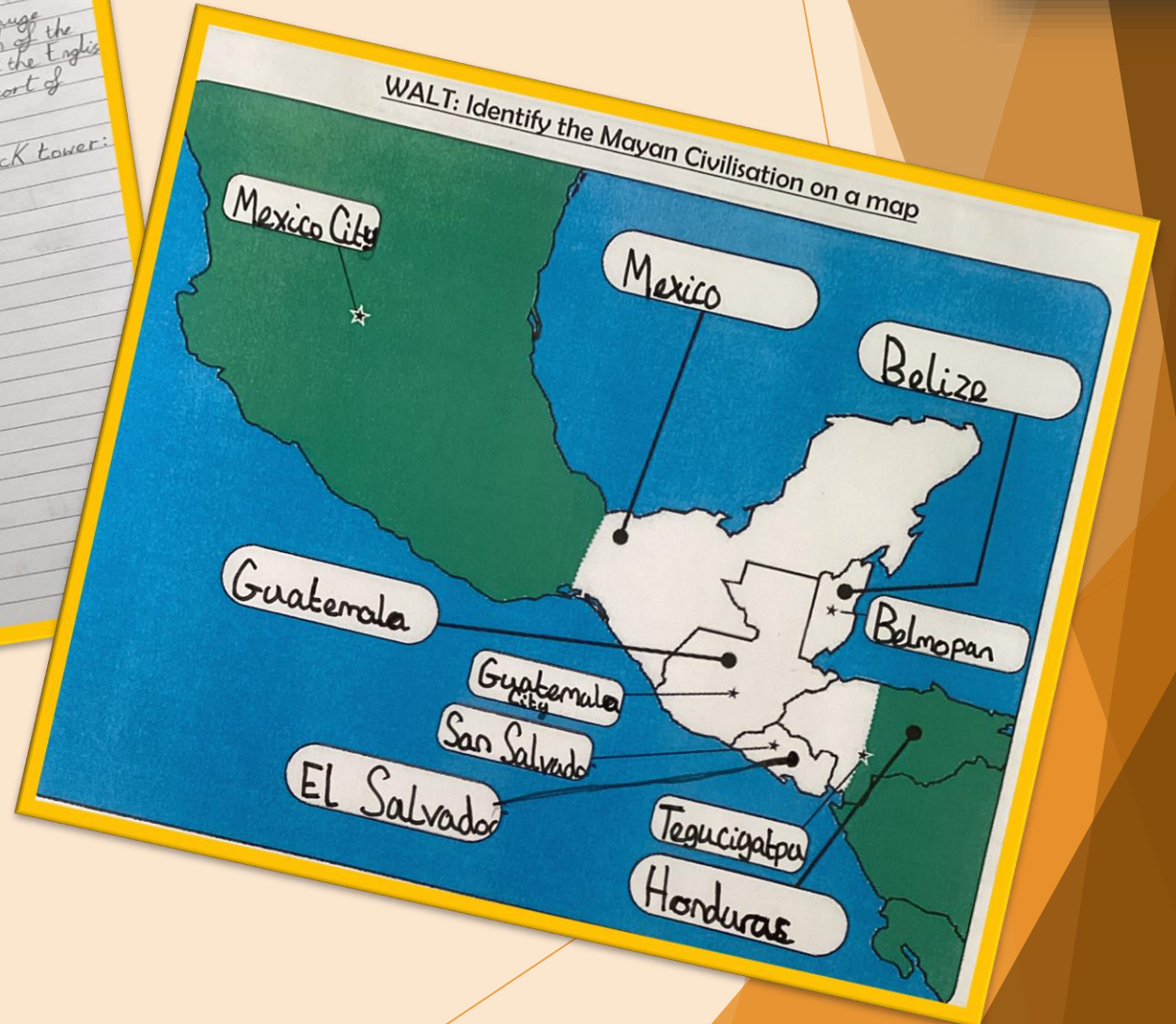
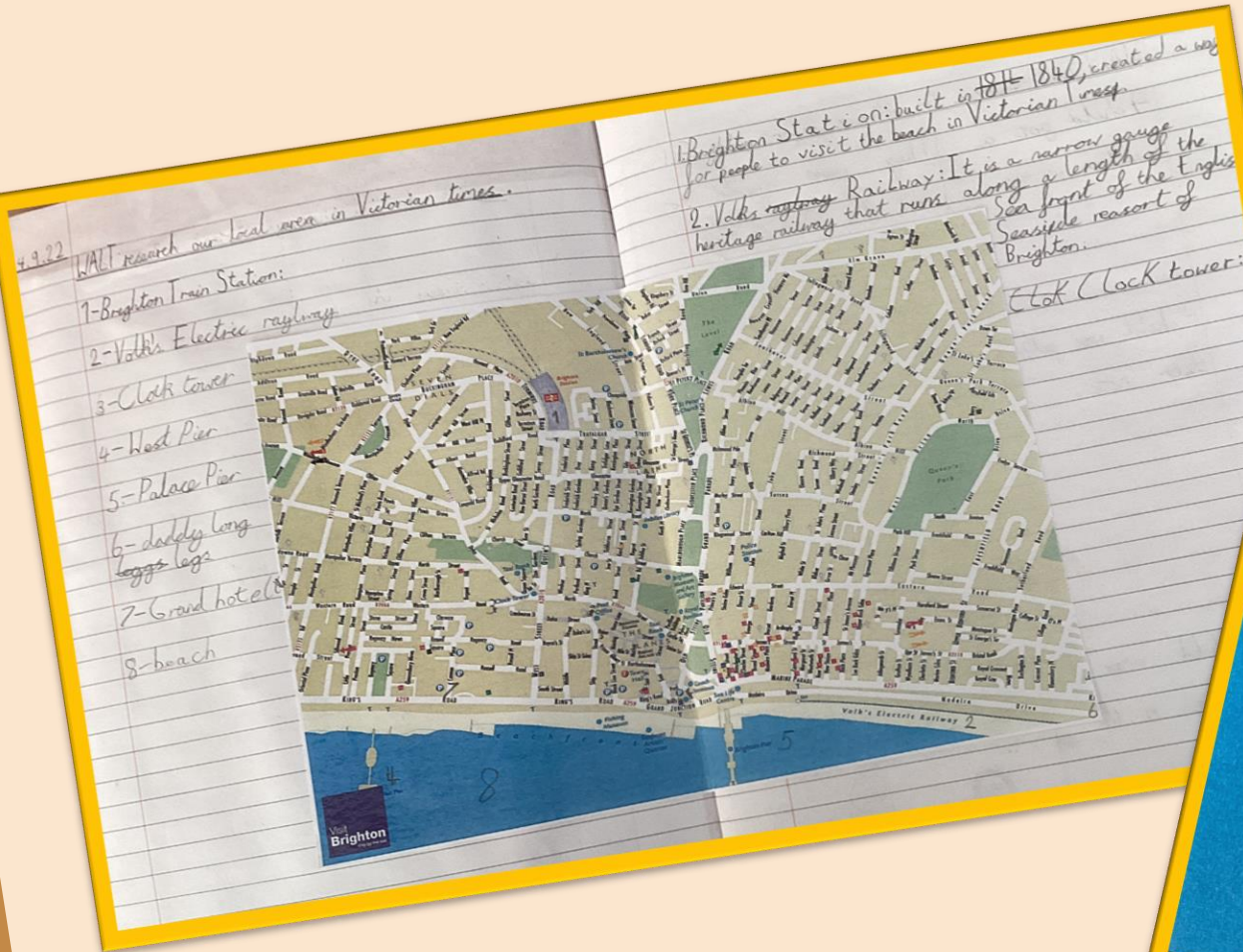


Year group	Autumn 1	Autumn 2	Spring 1	Spring 2	Summer 1	Summer 2
Year 3	<u>Me and My World</u>	<u>Me and My World</u>	<u>Invaders & Raiders</u>	<u>Invaders & Raiders</u>	<u>Battles and Bangs</u>	<u>Battles and Bangs</u>
Year 4	<u>Victorian Towns and Twisted Tales</u>	<u>Victorian Towns and Twisted Tales</u>	<u>Mysterious Maya</u>	<u>Mysterious Maya</u>	<u>To Infinity and Beyond</u>	<u>To Infinity and Beyond</u>
Year 5	<u>Power and Palaces</u>	<u>Power and Palaces</u>	<u>We'll Meet Again</u>	<u>We'll Meet Again</u>	<u>Seas, Storms & Survival</u>	<u>Seas, Storms & Survival</u> & <u>Glorious Greeks unit</u>
Year 6	<u>Frozen in Time</u>	<u>Frozen in Time</u>	<u>Walk Like an Egyptian</u>	<u>Walk Like an Egyptian</u>	<u>Blood, Bones and Body Bits</u>	<u>Blood, Bones and Body Bits</u> & <u>Stone Age Unit</u>

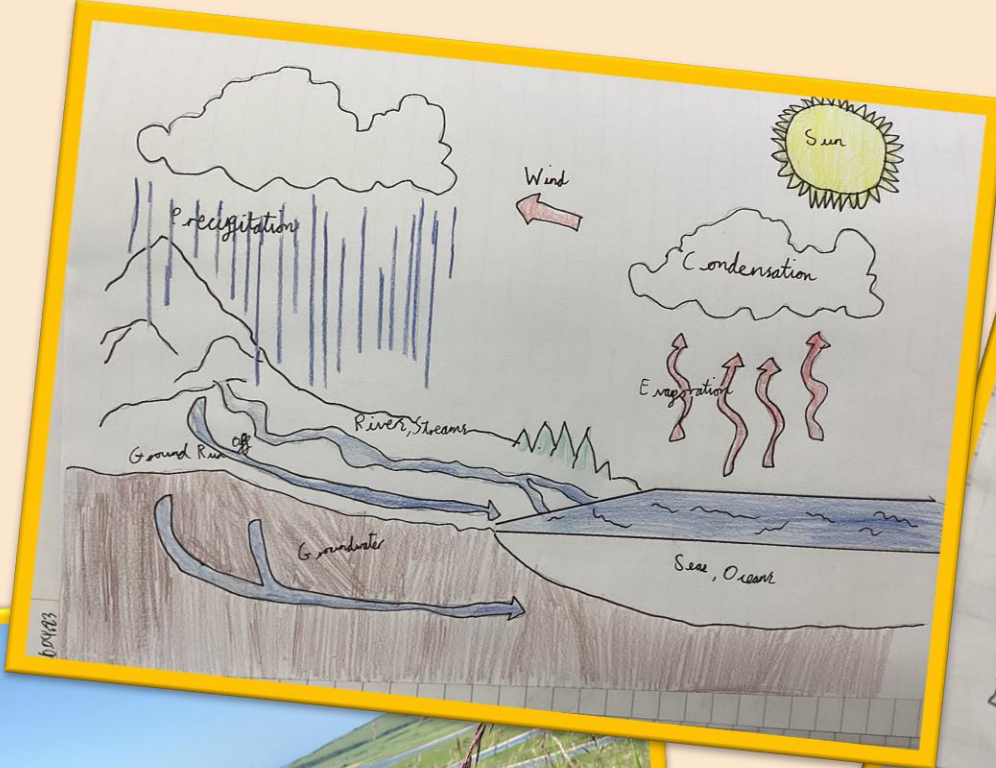
STANDARDS IN YEAR 3



STANDARDS IN YEAR 4



STANDARDS IN YEAR 5



- | | |
|--------------------------------------|-----------------|
| 1. England (London) | 11. Iceland |
| 2. Scotland, Wales, Northern Ireland | 12. Norway |
| 3. Germany | 13. Switzerland |
| 4. France | 14. Ukraine |
| 5. Italy | |
| 6. Poland | |
| 7. Russia | |
| 8. Holland | |
| 9. Spain | |
| 10. Portugal | |



STANDARDS IN YEAR 6



Rainforest

Flora

Rainforests have over 200,000 plant species including trees and shrubs. These tend to be 10-15 metres tall. Plants are very moist and are mostly green.




Location and Climate

The rainforest covers approximately 6% of the world's surface. They are located in Am. Africa, Central and South America and Australia. The temperature is between 20°C to 25°C all year round.

Fauna

Rainforests have at least 50 million animal species including frogs, antelopes, tigers, snakes, frogs, lizards, gibbons, monkeys, apes, etc.

Tiger

Identifying the features of global biomes.

Desert

- Temperature 44°C and 50°C
- Little rain
- Sand
- Acacia cactus
- Desert fox

Grass Savannah

- Temp: 40°C - 45°C
- dry and wet season
- dry grasses, few trees
- long, tall, acacia

Taiga / Coniferous Forest

- Temperature 50°C and 30°C
- Largest land biome
- Shallow layer, brown leaf litter
- Pine needles / leaves

Broadleaf / deciduous Forest

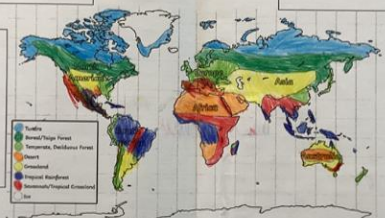
- Temp: 30°C - 50°C
- 4 seasons
- leaves go brown and drop from trees
- rain all year long
- Birds, mammals

Tundra

- Temp: 34°C - 6°C
- coldest biome
- very little rain
- no trees - small shrubs
- reptiles, birds, seals
- Wolves

Tropical Rainforest

- Rain all year round
- Temp: 20-25°C
- leaves are evergreen
- tall trees
- tropical fruits
- 47 different types of animals



WALT: research about Mountains and Mountain ranges

① **Mount Everest**

- Range: Himalayas
- Country: Nepal
- Continent: Asia
- Height: 8848m

② **Ben Nevis**

- Range: Grampian
- Country: Scotland
- Continent: Europe
- Height: 1344m

③ **Mont Blanc**

- Range: Alps
- Country: France
- Continent: Europe
- Height: 4807m

④ **Aconcagua**

- Range: Andes
- Country: Argentina
- Continent: South America
- Height: 6961m

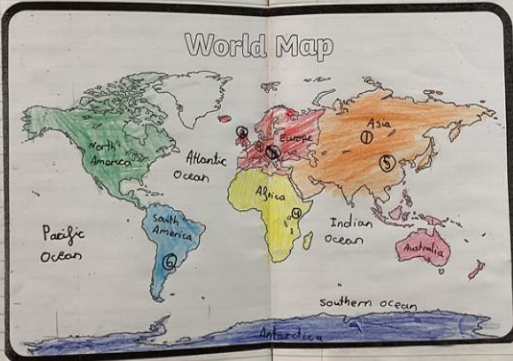
⑤ **K2**

- Range: Himalayas
- Country: China/Tibet
- Continent: Asia
- Height: 8611m

⑥ **Kilimanjaro**

- Range: None
- Country: Tanzania
- Continent: Africa
- Height: 5895m

World Map



Taiga

Location

In Canada, Alaska, Sweden, Finland and Norway the climate is cold and there is a lot of snow. The temperature is 10°C to 50°C but no more. Rain falls in light up to 200-250mm per year.

Vegetation

There is only 16 months of the year when plants like spruce, pine, fir are able to grow. Most of the trees are pine and spruce. They are very tall and thin. They have very little leaves. They have very little leaves. They have very little leaves.

Animals

The TAIGA forest is one of the most beautiful in the world. It is very large and has a lot of animals. There are many bears, wolves, and other animals. There are many bears, wolves, and other animals.

Kilimanjaro

Mount Kilimanjaro is one of the world's seven summits.






5-10 people die every year attempting to climb it.

It is in Tanzania, Africa.


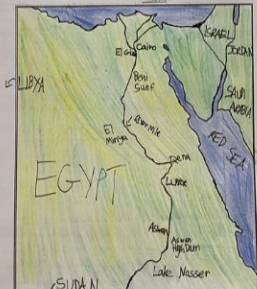
The three cones, Mawenzi, Kibo, and Nguvu, are the highest peaks. Kibo is the highest peak.

Mount Kilimanjaro is a dormant volcano.

35000 people climb it every year.

WALT: Identify and explain the physical characteristics of Egypt


Pupil Voice



"I really like learning about different countries. It is linked to history so when we learnt about Vikings we looked at countries they invaded."

Year 3 pupil

"I enjoy using the atlases to find out where mountain ranges are and extra information about them. I like looking at things in our local area as well."

Year 4 pupil

"I like Geography because we go on lots of field trips and do fun activities such as identifying features on map. I really enjoyed the Cuckmere Haven trip when we measured the tide."

Year 5 pupil

"I like learning about different countries and their cultures as well as the people that live there. It is linked to other subjects such as Science which I also enjoy."

Year 6 pupil

Enrichment Opportunities



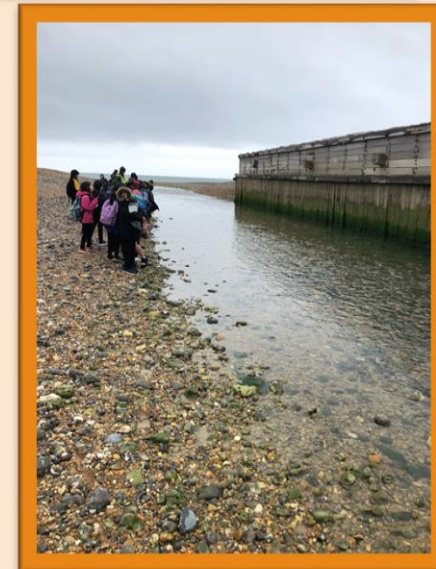
Year 3 spent time getting to know our local area, Burgess Hill and comparing it to a rural area in Scotland to enhance their geography lessons.



Year 4 have been to Brighton to explore our local area as well as explored the continents of the world to support their geography learning.

Enrichment Opportunities

Year 5 consolidated their work on rivers by visiting Seven Sisters. Here they had the opportunity to see the different parts of a river and how they feed into the sea.



In January we held a Geography Day. Children went around Europe learning about the cultures and traditions of different European countries.